

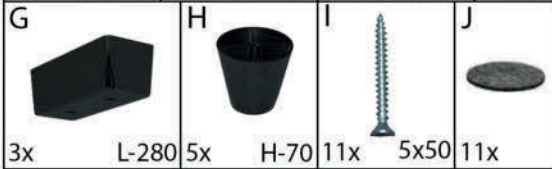
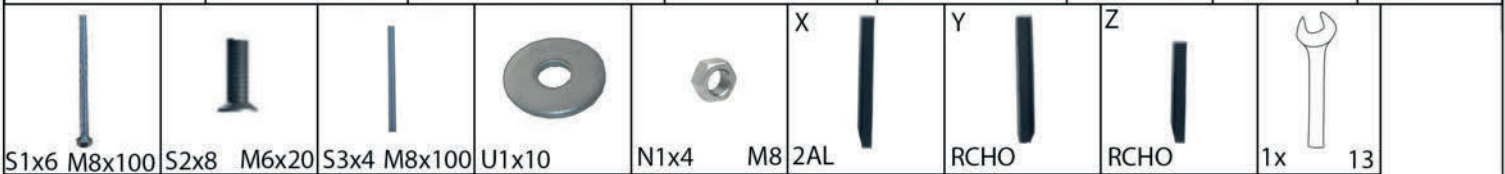
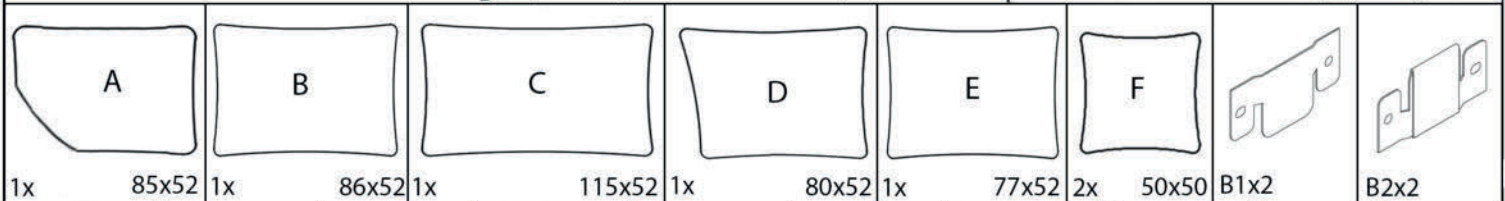
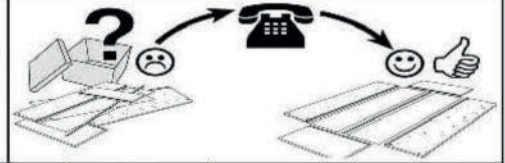
Davide (2AL-RCHO)(RCHO-2AL) variabel



- | | |
|----------------------------------|--------------------------------|
| (DE) Montageanleitung | (FR) Notice de montage |
| (PL) Instrukcja montażu | (RO) Instrucțiuni de asamblare |
| (NL) Handleiding voor de montage | (SK) Montážny návod |
| (GB) Assembly instructions | (CZ) Montážní návod |
| (TR) Montaj talimatı | (HU) Szerelési útmutató |
| (RU) Инструкция по монтажу | (SLO) Navodila za montažo |
| (IT) Istruzioni di montaggio | |

Service - Servis - Dienstverlening - Servis - Serwis - Сервисная служба - Servizio - Service
 Serviciu - Služby - Szolgáltatás - Storitev

Da es sich hier um ein variables Modell handelt, muss vor Montage entschieden werden, welches Element rechts oder links stehen soll. Entsprechend müssen dann die Arm- bzw. Rückenlehnen angebracht werden. Hierzu den Reißverschluss an der Unterseite öffnen und anhand der vorhandenen Bohrungen in den Seitenwänden die Löcher im Stoff freilegen (Schere, Cuttermesser o.ä.).

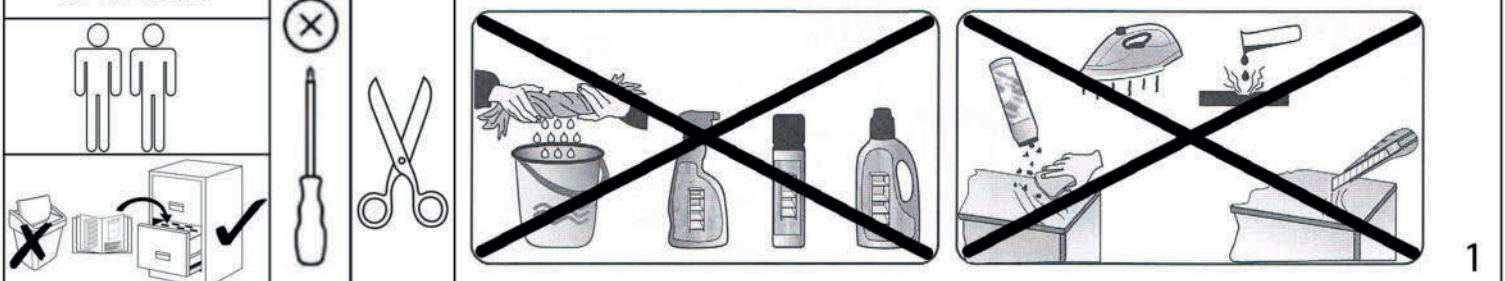


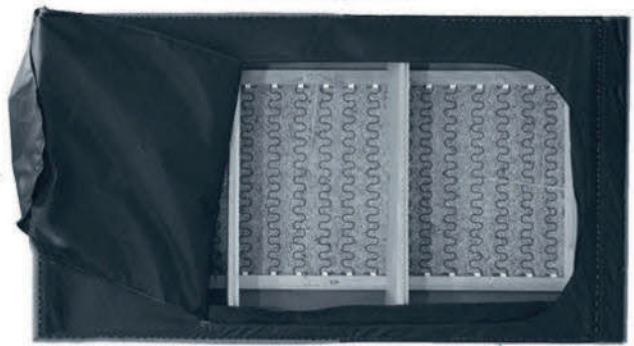
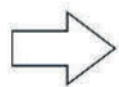
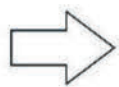
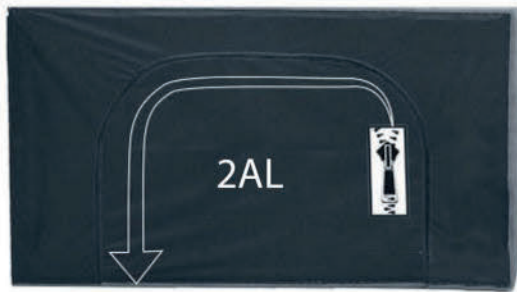
2AL-RCHO
L=2-4



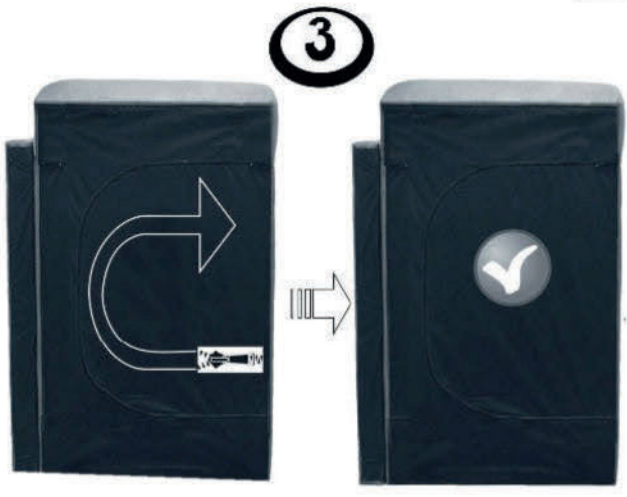
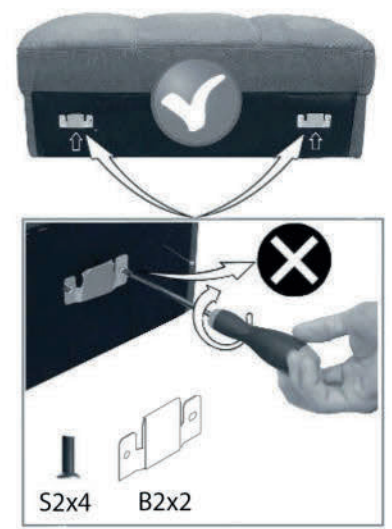
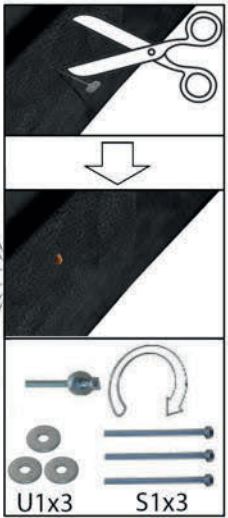
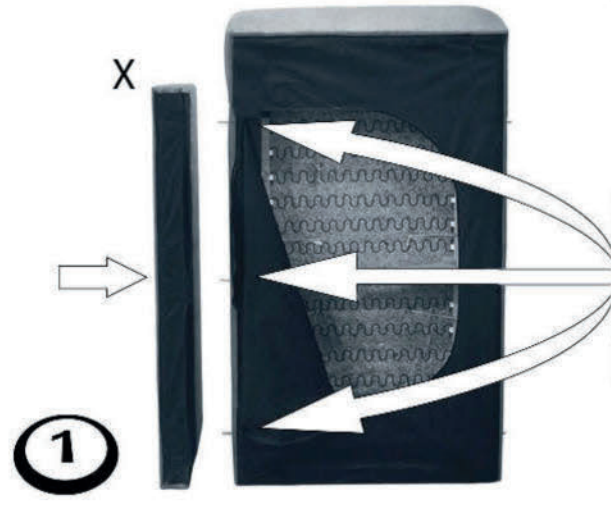
RCHO-2AL
R=5-7

03-02-2026



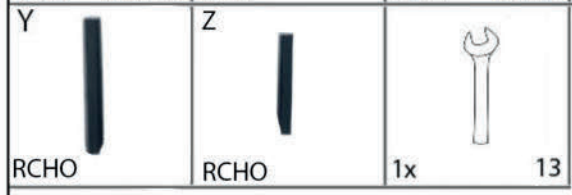
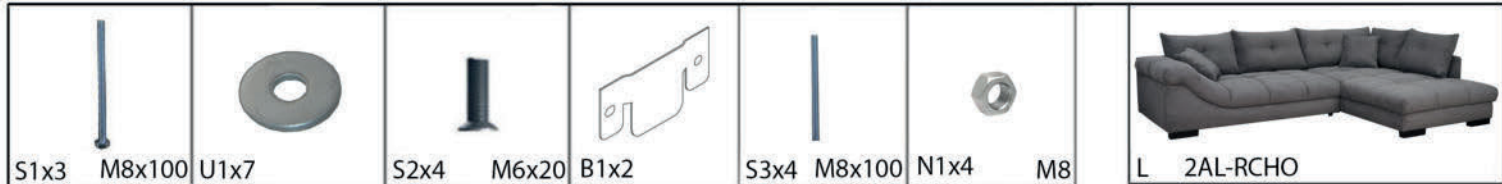


						X	
S1x3	M8x100 U1x3	S2x4	M6x20	B2x2	1x	13	2AL

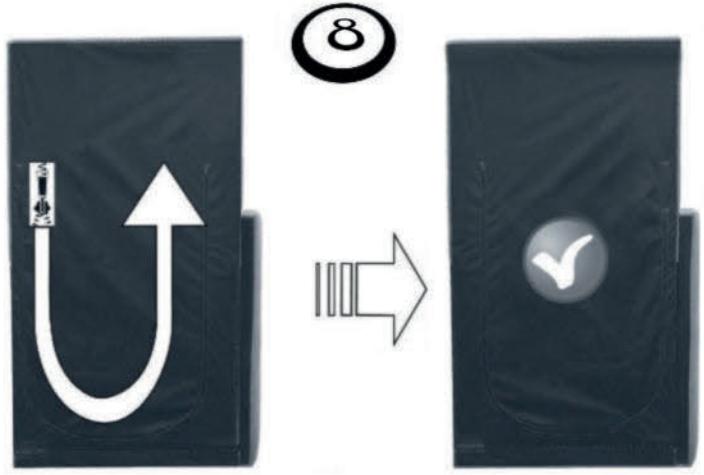
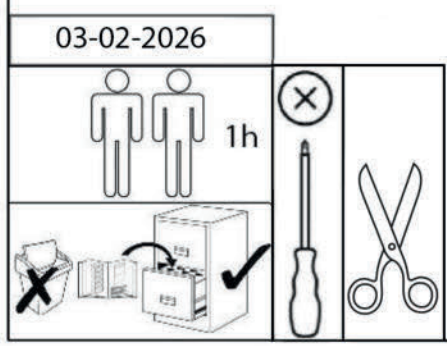
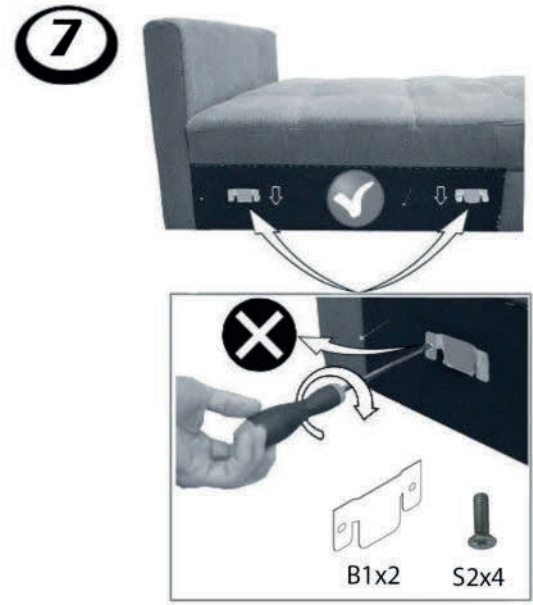
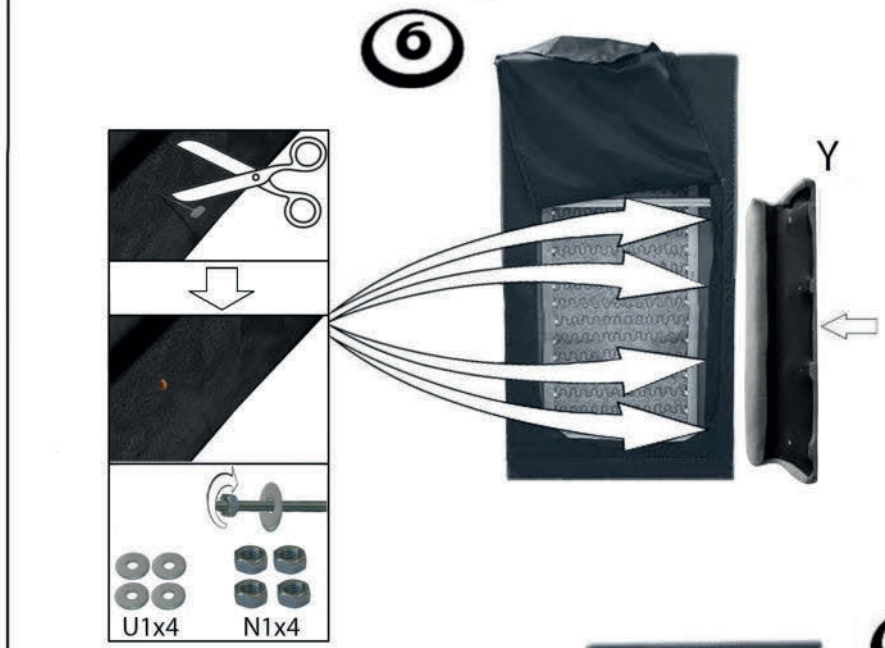
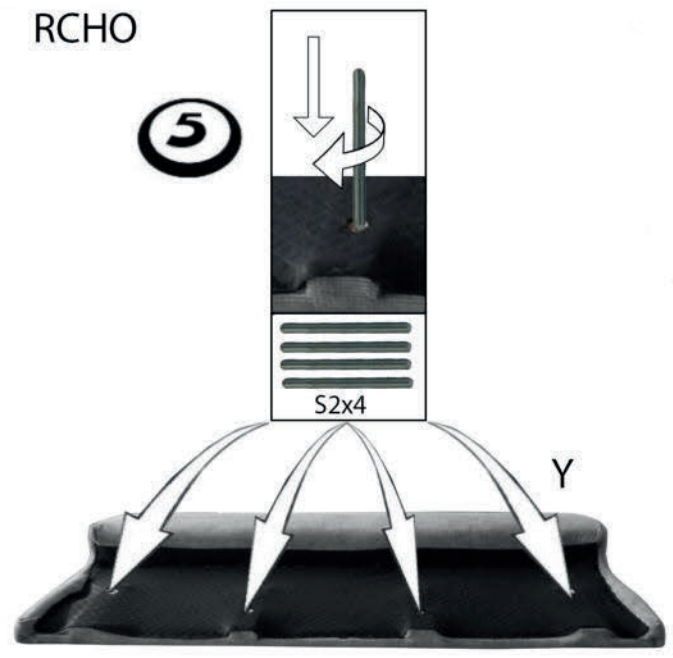
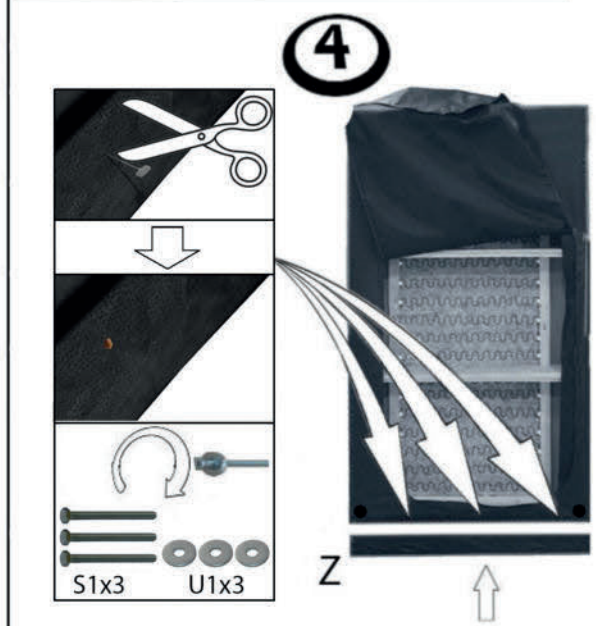


03-02-2026

	1h		



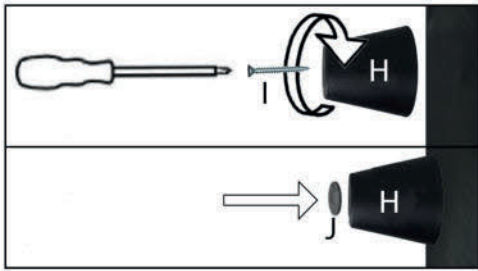
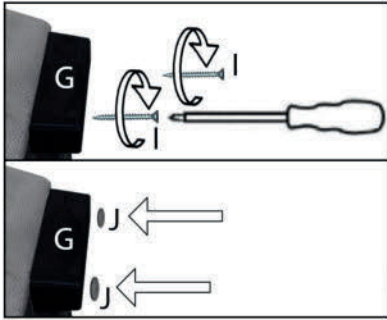
RCHO



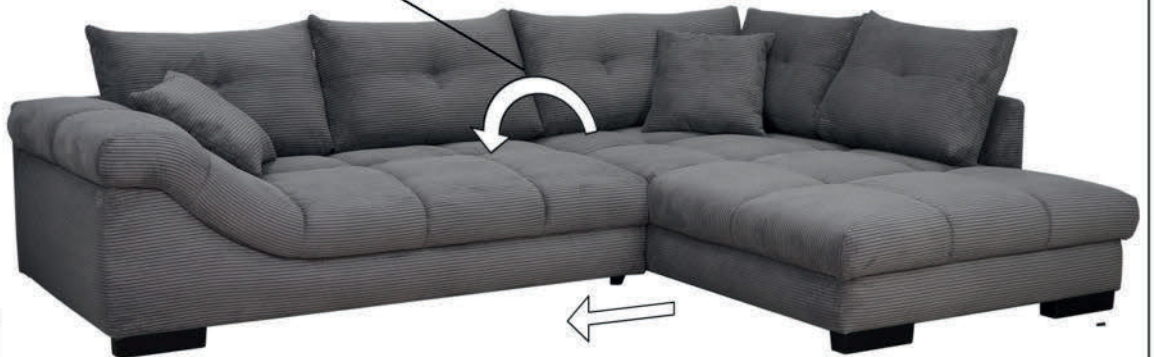
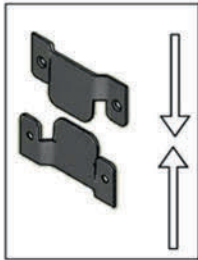
G	H	I	J
3x L-280	5x H-70	11x 5x50	11x



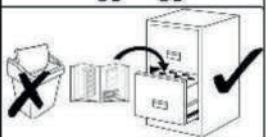
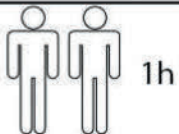
9

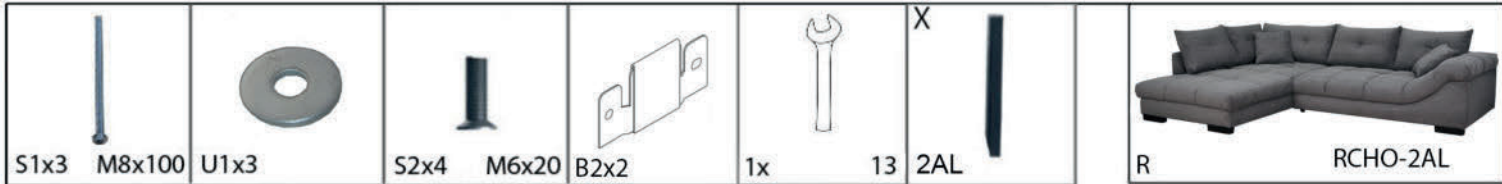


10

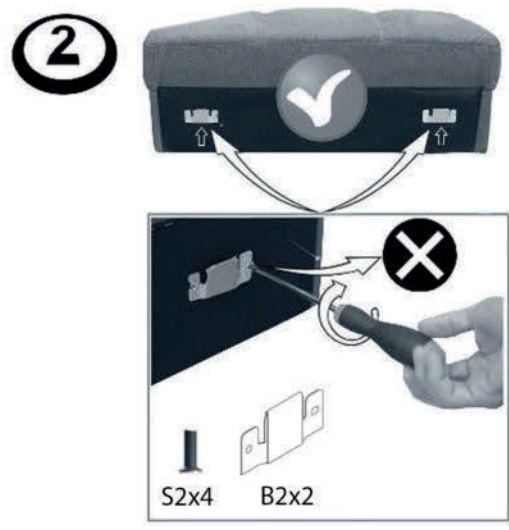
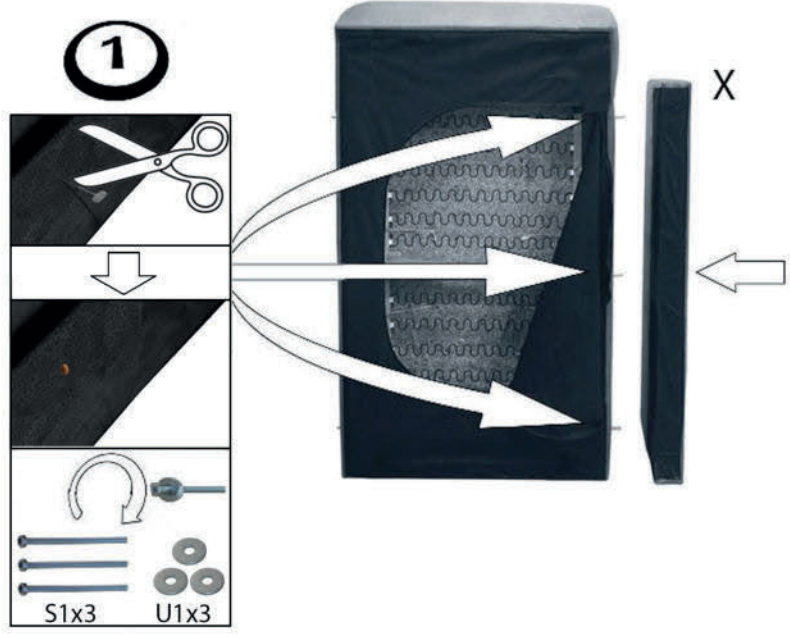


03-02-2026

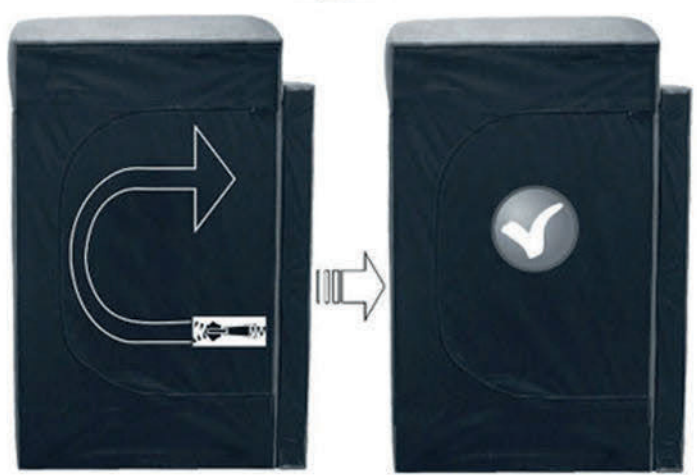




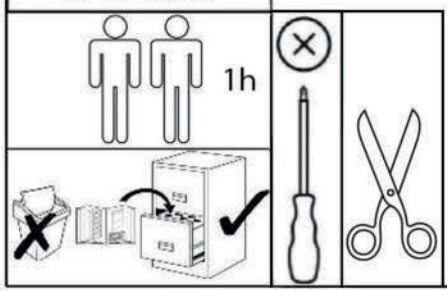
2AL



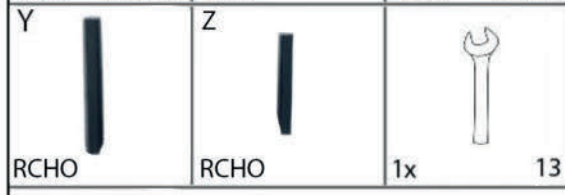
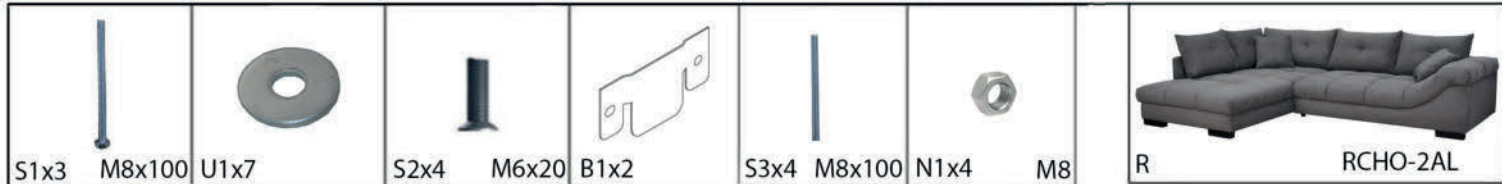
3



03-02-2026

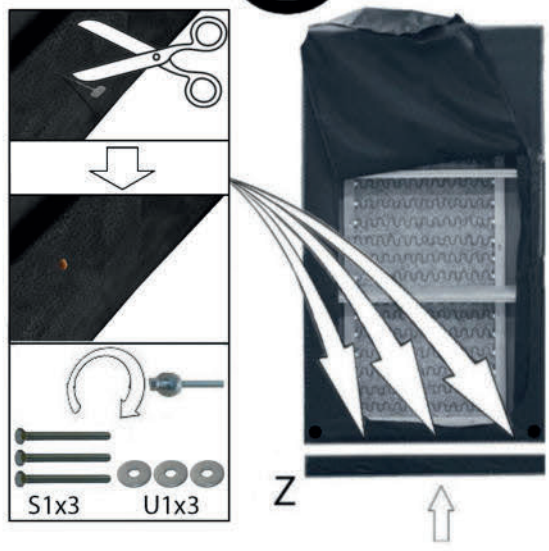


1h

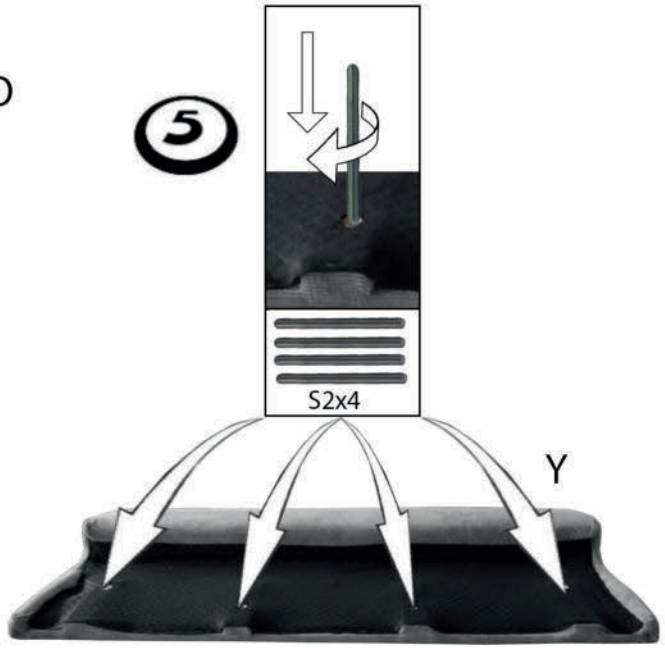


RCHO

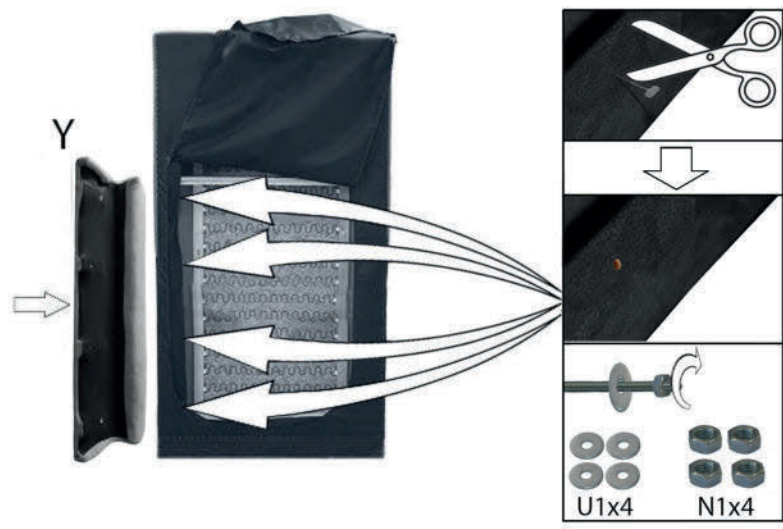
4



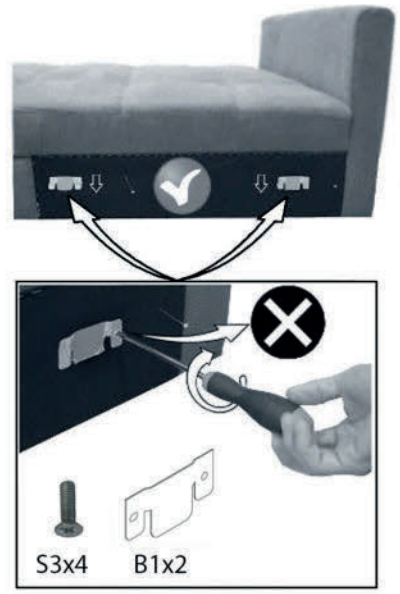
5



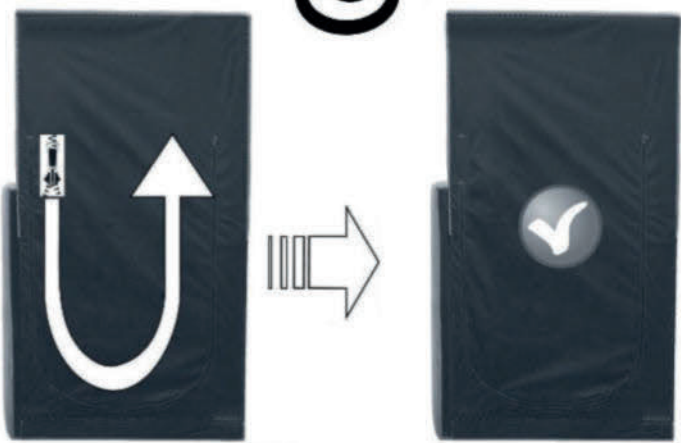
6



7



8



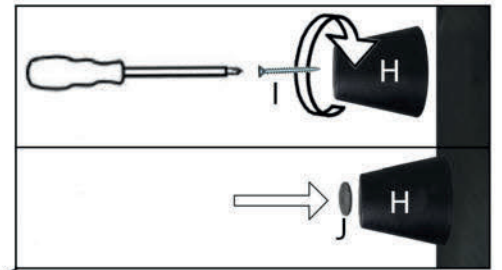
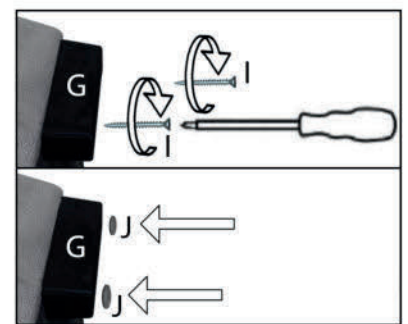
03-02-2026

	1h		

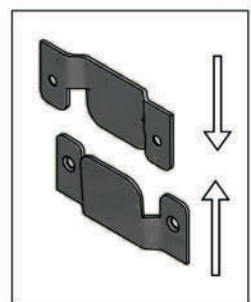
G 	H 	I 	J 
3x L-280	5x H-70	11x 5x50	11x




9



10



03-02-2026

 1h 